



US Army Corps
of Engineers

One Corps Serving the Army and the Nation

***Patrick Street
Section 14 Project
Charleston, WV***

July 21, 2005



US Army Corps
of Engineers

One Corps Serving the Army and the Nation

Agenda

- ◆ Explain Section 14 Authority –Beth Cade
- ◆ Discuss Section 14 Process – Beth Cade
- ◆ Describe issues and problems of riverfront along Kanawha Boulevard – Mike Spoor
- ◆ Questions and Answers





US Army Corps
of Engineers

One Corps Serving the Army and the Nation

What is a Section 14?

◆ **Authority: Allows the Corps to participate**

Authorized as Section 14, Flood Control Act of
1946, as amended



US Army Corps
of Engineers

One Corps Serving the Army and the Nation

What is a Section 14?

◆ Definition:

This program is designed to protect public or non-profit public facilities that are being threatened by natural processes on stream banks and shorelines, and are essential and important enough to merit Federal participation in their protection



US Army Corps
of Engineers

One Corps Serving the Army and the Nation

Eligible Facilities

- ◆ Highways and highway bridge approaches,
- ◆ Public Works
- ◆ Churches
- ◆ Public and Private nonprofit hospitals
- ◆ Schools
- ◆ Known cultural resources whose significance has been demonstrated by a determination of eligibility for listing on, or actual listing on, the National Register of Historic Places



US Army Corps
of Engineers

One Corps Serving the Army and the Nation

How does the Process Work?

- ◆ Problem Identified
- ◆ Corps receives Letter of Intent from City
- ◆ Initial Study Allowance of \$40,000 (100% Federal)
- ◆ Preliminary Assessment to determine project eligibility, sponsor capability and engineering feasibility.
- ◆ Planning and Design Analysis – Development of Solution, NEPA, Final Project Design, Real Estate Plan, Cost/Benefit Analysis, Plans and Specs



US Army Corps
of Engineers

One Corps Serving the Army and the Nation

How does the Process Work?

- ◆ Report plus Project Cooperation Agreement (PCA) goes to Division for approval
- ◆ Construction
- ◆ Cost Share:
 - 65% Federal
 - 35% Non-Federal
 - 5% of Local Share must be Cash
 - \$1,000,000 Maximum Federal Contribution



One Corps Serving the Army and the Nation

**US Army Corps
of Engineers**





One Corps Serving the Army and the Nation

**US Army Corps
of Engineers**





One Corps Serving the Army and the Nation

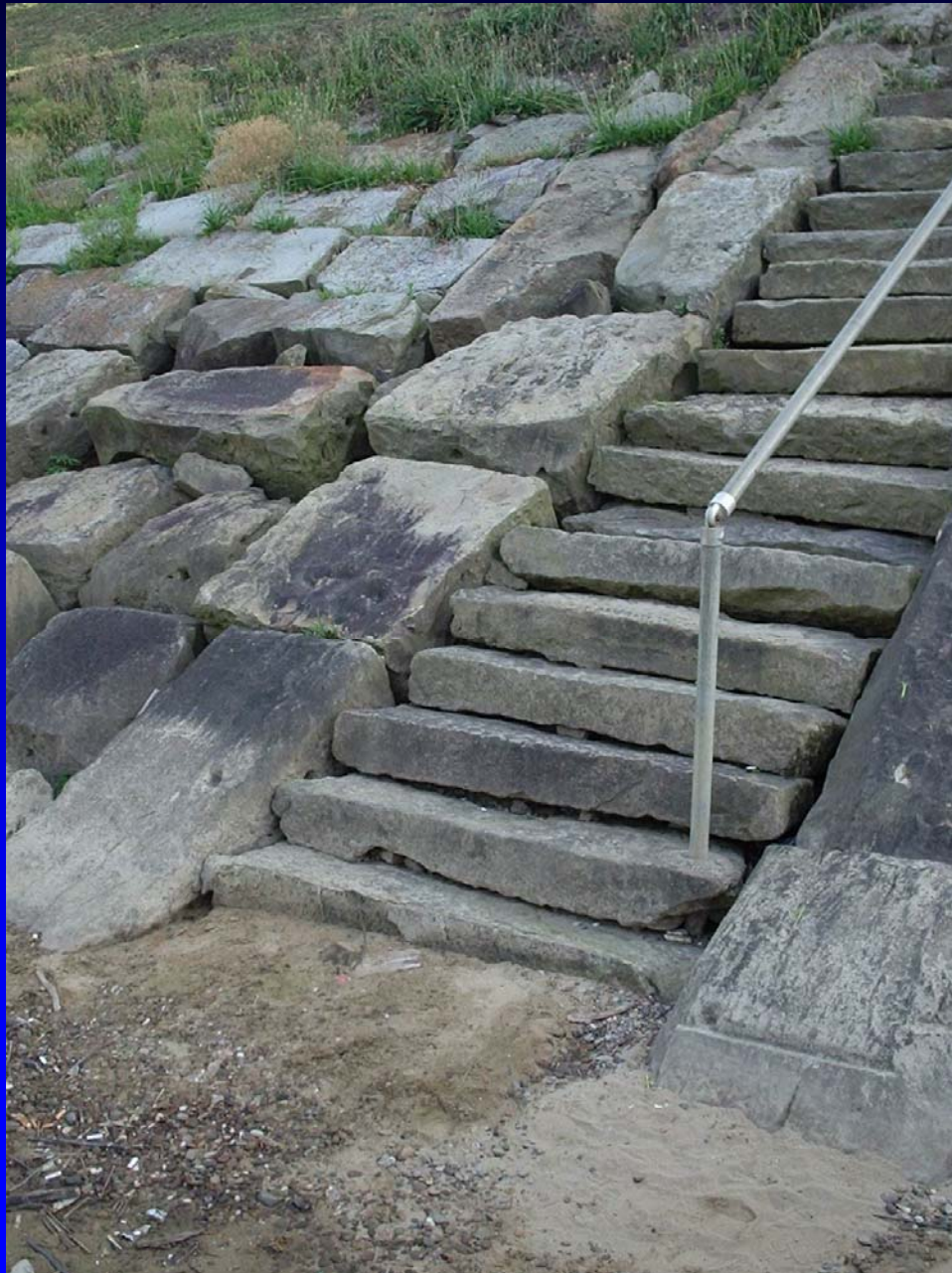
**US Army Corps
of Engineers**





**US Army Corps
of Engineers**

One Corps Serving the Army and the Nation





One Corps Serving the Army and the Nation

**US Army Corps
of Engineers**





One Corps Serving the Army and the Nation

**US Army Corps
of Engineers**





One Corps Serving the Army and the Nation

**US Army Corps
of Engineers**





One Corps Serving the Army and the Nation

**US Army Corps
of Engineers**





One Corps Serving the Army and the Nation

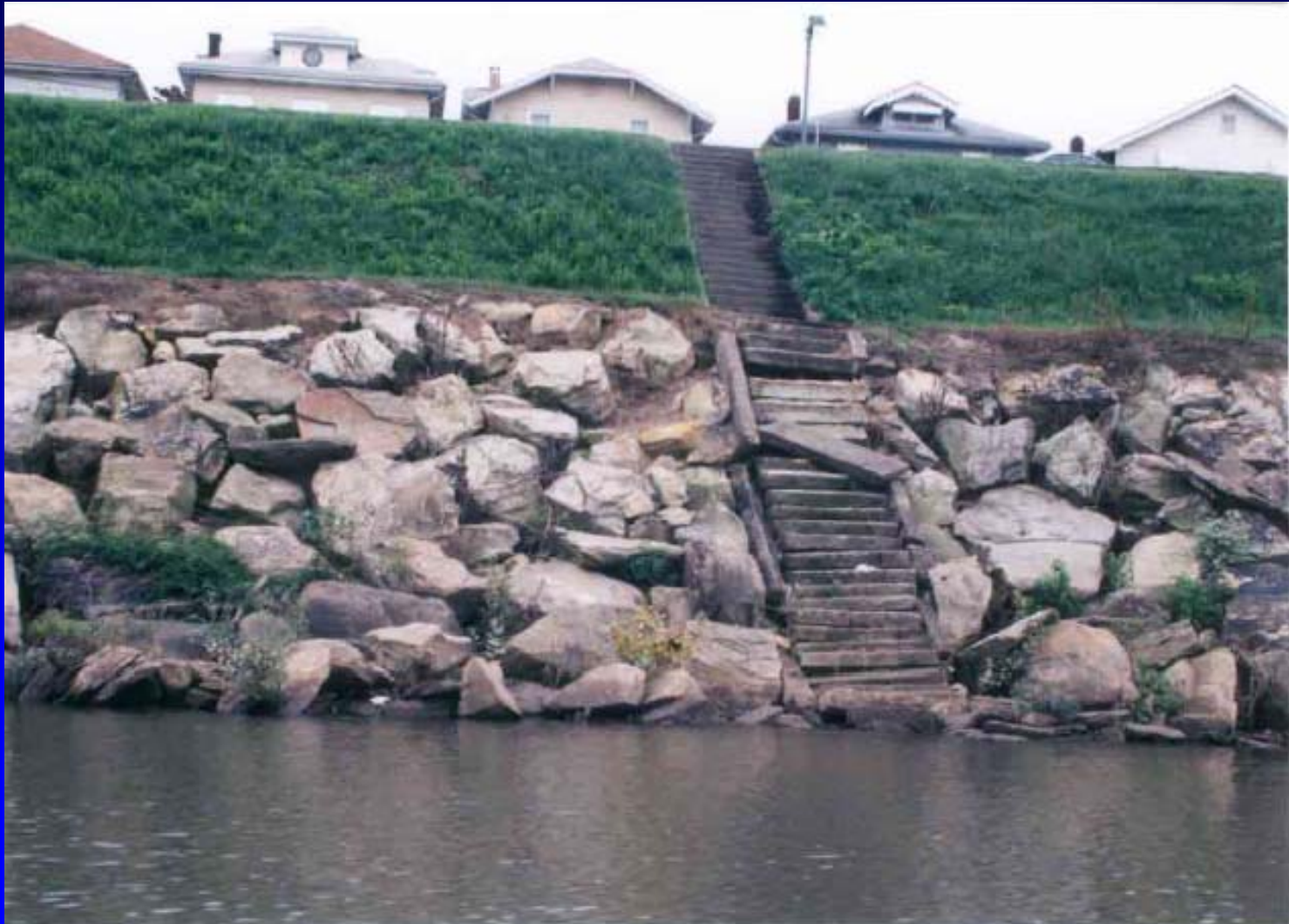
**US Army Corps
of Engineers**





One Corps Serving the Army and the Nation

**US Army Corps
of Engineers**





One Corps Serving the Army and the Nation

**US Army Corps
of Engineers**





One Corps Serving the Army and the Nation

**US Army Corps
of Engineers**





US Army Corps
of Engineers

One Corps Serving the Army and the Nation

Contact Information

BETH CADE

COMMUNITY PLANNER

PLAN FORMULATION SECTION

502 EIGHTH STREET

HUNTINGTON, WEST VIRGINIA 25701

PHONE: (304) 399-5848

EMAIL:

Beth.A.Cade@lrh01.usace.army.mil